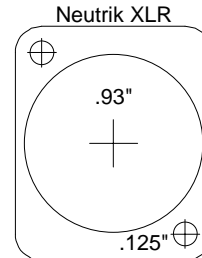
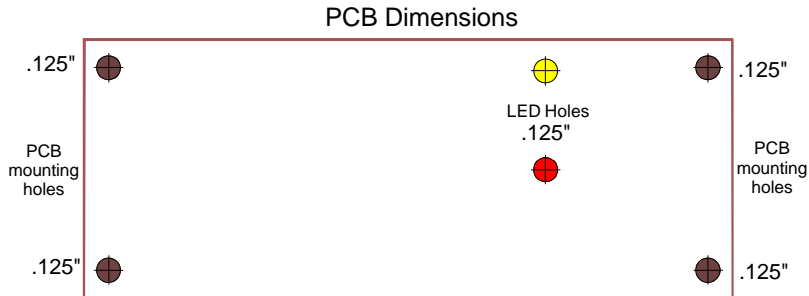


**BEFORE PRINTING TURN OFF ANY SIZE ADJUST SETTINGS ON YOUR PRINTER,
VERIFY PRINTED HOLE SIZES BEFORE DRILLING**

DS5 DRILL TEMPLATE

Cut and tape this template on your chassis to use as a guide.
Re space the connectors and PCB as desired.



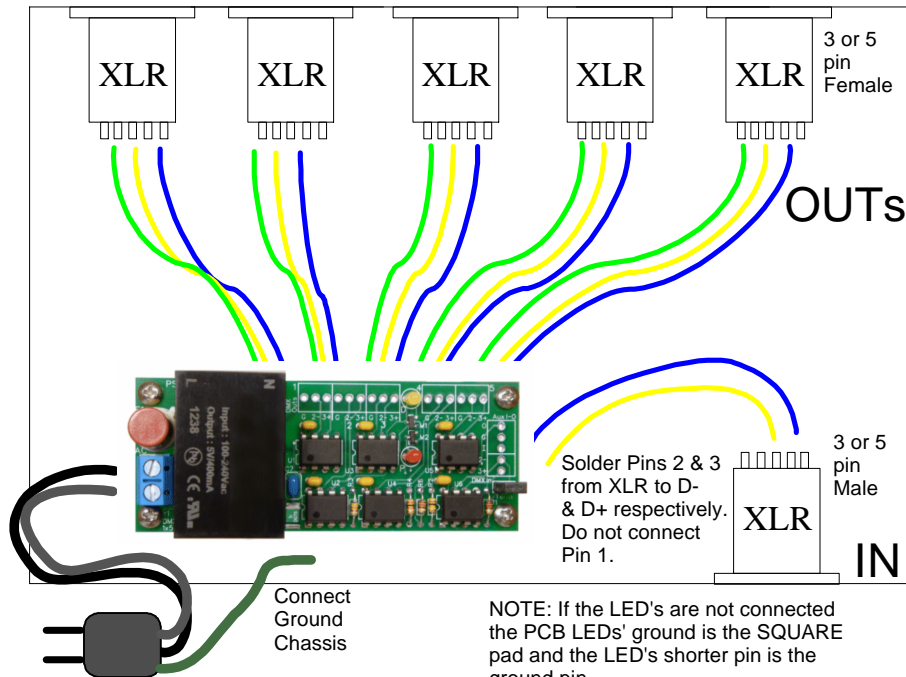
XLR Dimensions
For Neutrik #'s
NC5MD-L-BAG-1
NC5FD-L-BAG-1
NC3MD-LX-BAG-1
NC3MD-LX-BAG-1

Any 3 or 5 pin XLR connector can be used,
chassis mount or in line.

**Handle the PCB with static electricity precautions -
touch a grounded source to discharge static electricity before touching the PCB**

WIRING DIAGRAM

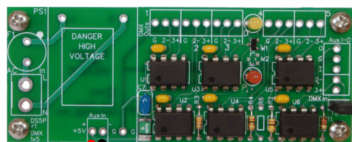
If more than 1 DS5-PCB's are used to give more than 1 output,
loop the DMX inputs together in a daisy chain fashion and terminate
the last PCB by shorting the jumper. Insure all other jumpers are open.



Recommended wire:
Use 26 or 24 AWG stranded & twisted together. Take care AND inspect that the wires do NOT short. Check for stray wires that could short.

Insure the AC cord is unplugged. Trim the AC line wires so that only bare copper is exposed under the screw and that there is no exposed copper outside that may cause electric shock. Connect the ground wire to the chassis, use a star washer to insure a good connection. Connect the "Line" (HOT) wire to the PCB Labeled "L" and snug the screw, Connect the "Neutral" wire to the PCB labeled "N" and snug the screw.

DMX Input: Connect the input XLR Pins 1, 2, from the XLR to the PCB inputs.
DMX Output: Connect the output XLR pins 1, 2, and 3 from the PCB to the output XLR connector, Matching to Pins 1, 2, & 3.



+5VDC
Power Supply Negative

If an onboard power supply is not installed, connect a regulated +5V source to the 'Aux' pin noting polarity, and disregard the "High Voltage" markings.